



People365[®]
HCM

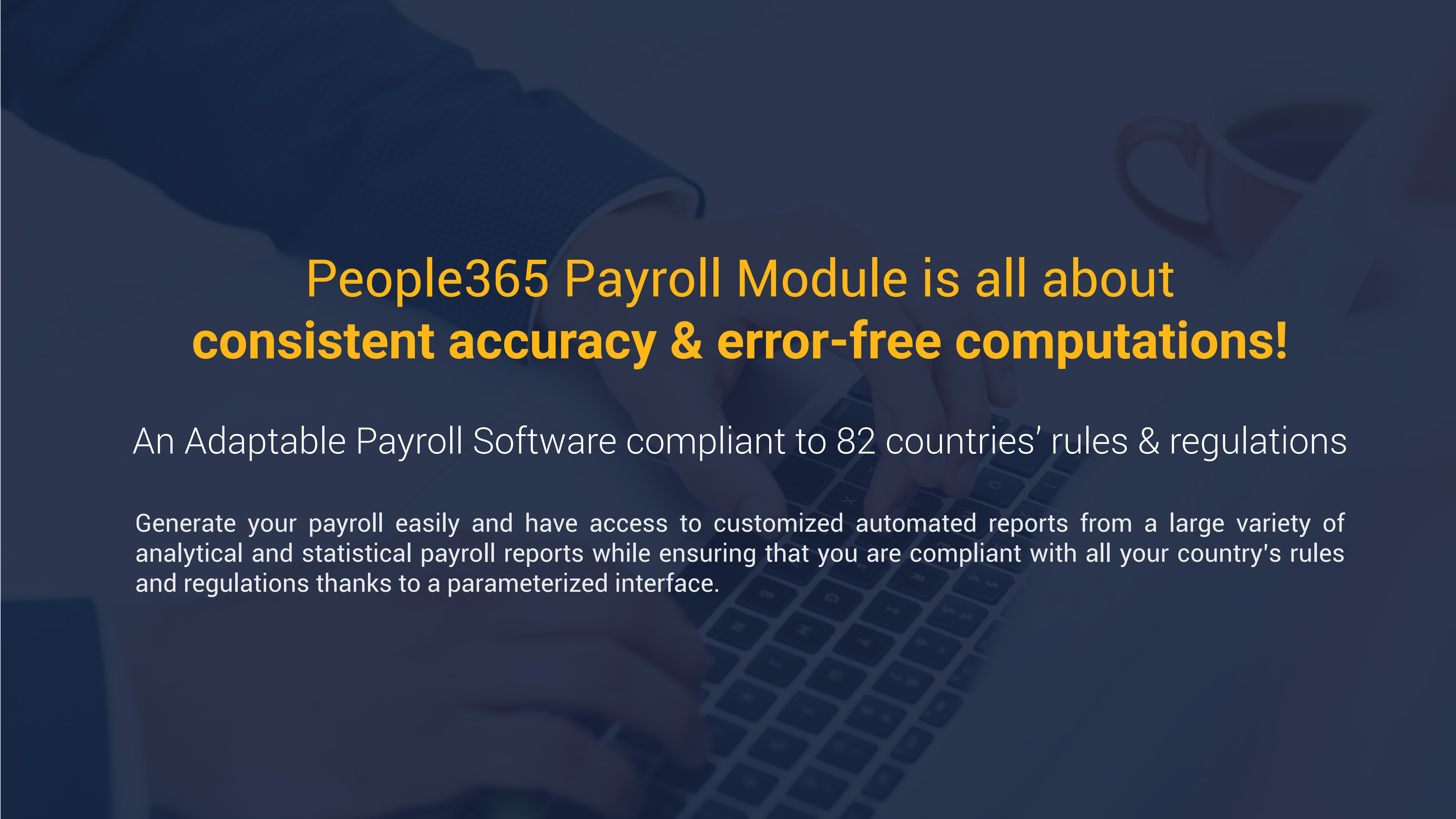
PEOPLE365 PAYROLL MODULE

www.people365.com

PEOPLE365 IS YOUR LEADING HUMAN CAPITAL MANAGEMENT SYSTEM

Being a leading HCM provider in the EMEA region, with over 33 years of experience, "People365" is a comprehensive Human Capital Management System (HCMS) consisting of the Time & Workforce Management, Scheduling, Payroll, HR and Mobility modules. Having more than 1,200 references coming from leading companies in all types of industries, People365 is compliant with more than 82 countries' rules and regulations. The system helps companies manage the complete work cycle, from headhunting human talents all the way to retirement. People365 operates both regionally and globally, covering the EMEA region through offices in UAE, KSA, Egypt and Lebanon.





People365 Payroll Module is all about **consistent accuracy & error-free computations!**

An Adaptable Payroll Software compliant to 82 countries' rules & regulations

Generate your payroll easily and have access to customized automated reports from a large variety of analytical and statistical payroll reports while ensuring that you are compliant with all your country's rules and regulations thanks to a parameterized interface.

PAYROLL MODULE HIGHLIGHTS



Automated Payroll Wizard

Generating simplified and swift payroll with automated pay slip approval for employee access.



Government Compliance

Ensuring payroll compliance with your country's rules and regulations through an intuitive parameterized interface.



Automated Payroll Wizard

Catering to multiple entities, ensuring harmonious integration with diverse organizational structures.



Accounting Integration

Integrating payroll transfer to third-party accounting systems seamlessly.



Language & Currency

Setting the pay stream to preferred language and currency based on the organization's norms and practices.



Insightful Reports

Customizing and generating automated analytical and statistical reports with our resourceful toolset.



Integration with Time

Integrating employee attendance for precise payroll adjustments.



Empowering Workforce

Enabling employees to track their pay slip through mobile and web access.

PAY WORKFLOW



SELF SERVICE

Requests of
Loan / Advance

Requests of
Insurance Upgrades

View Payslips
& Salary History



OPERATE

Employee Payroll
Generation

Air Fair
Management

Pensions, EOS,
NSSF Others...

Employee Loan
& Advance

Dependents
Allocations

Insurance/School
Allowances

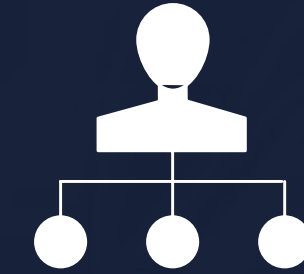


ANALYZE

Employee
Salary History

Employee
Allocations

Salary Raise
Forecasts



PLAN

Payroll Rules
& Regulations

Payroll
Exceptions

Financial
Reports Settings

Banks &
Accounts

Insurance
Policies



People365[®]
HCM

UAE:

Dubai International Financial Centre, Gate Avenue,
South Zone, Level 1, Unit 208, P.O. Box: 263031
Tel: +971 48137746

KSA:

7036 Saiyda Street, 2487 Al Duraihemiyah District,
Postal Code: 12796
Riyadh Kingdom of Saudi Arabia

EGYPT:

Gamal Abdel Nasser Street, Arabella Plaza,
Building No.3, 3rd Floor, Office No. 374

LEBANON:

Address 1:

Beirut, Downtown, Emir Bechir Street,
Bashoura 933, Lazaristes Building Bloc A2-1, 5th & 6th floor
P.O. Box: 3553-11 | Riad El Solh
Tel: +961 1975555
Mob: +961 3208900

Address 2:

Beirut, Sin El Fil, Daoud Ammoun Street
Qubic Square Business Center, 9th Floor
Tel: +961 1975555 | +961 1505155

www.people365.com